

## **Recent Economic and Demographic Trends in Regina**

**prepared for the  
Regina Chamber of Commerce  
October, 2001**

Doug Elliott  
Sask Trends Monitor  
444 19th Avenue  
Regina, Saskatchewan  
S4N 1H1  
306-522-5515  
sasktrend@sk.sympatico.ca  
www.sasktrends.ca

# Outline

## ⇒ Demographic Trends

- Population
- Age Groups
- Aboriginal Population

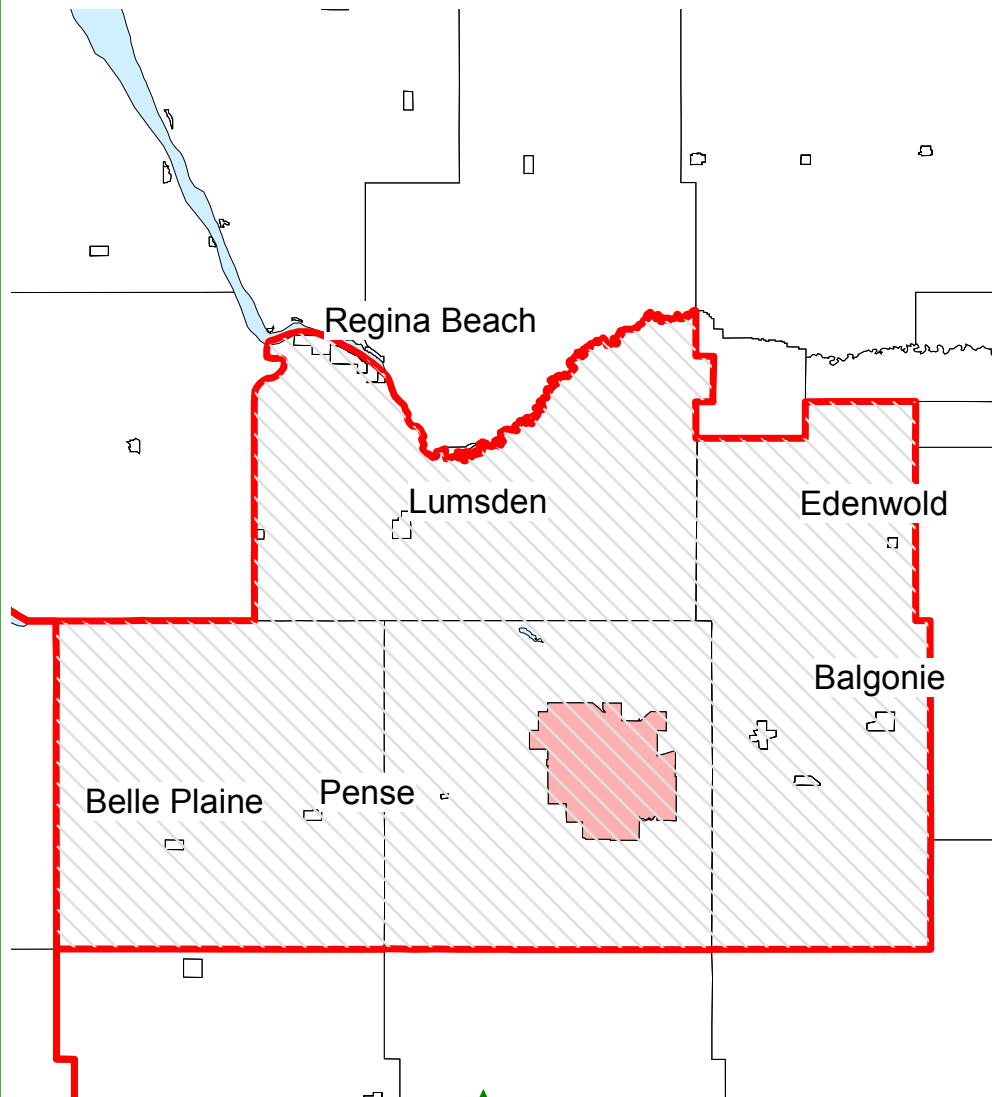
## ⇒ Economic Trends

- Employment
- Employment by Industry and Occupation
- Construction and Building Permits
- Income

## ⇒ Summary and Outlook

*Note: These data are from reliable sources, typically Statistics Canada; forecasts and estimates are the responsibility of Sask Trends Monitor.*

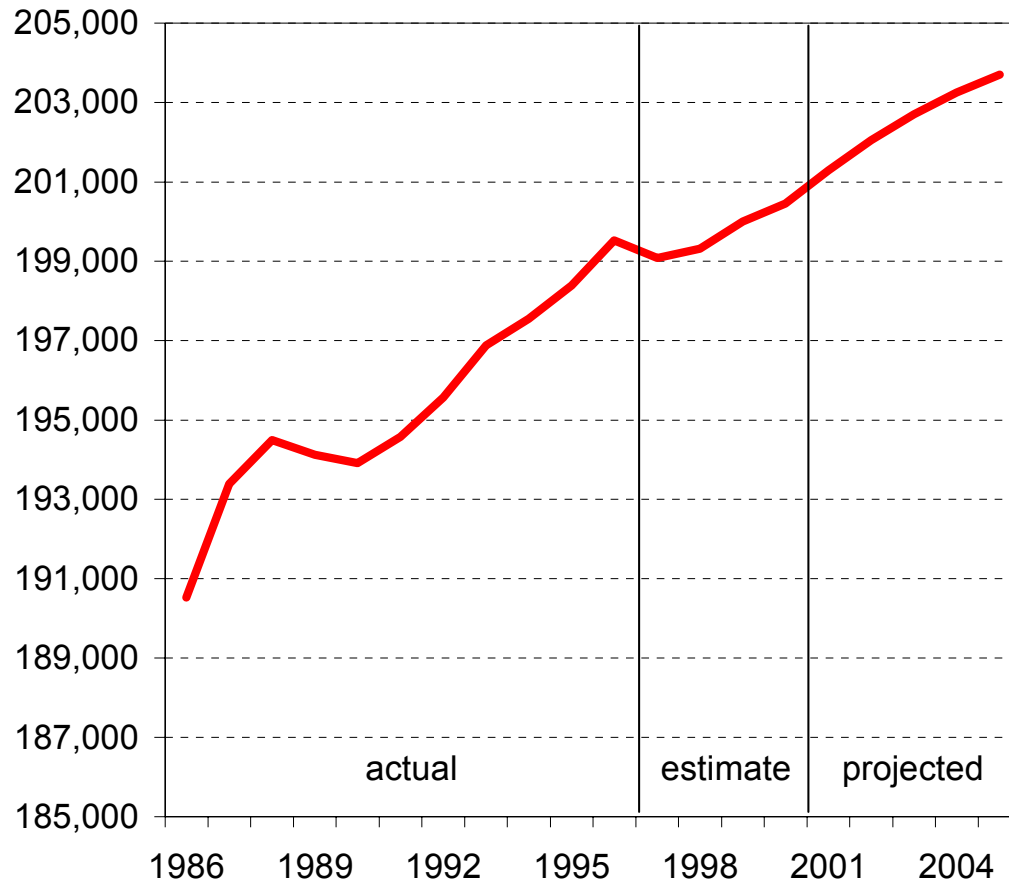
# Census Metropolitan Area



- Some of Statistics Canada's numbers refer to the Census Metropolitan Area (CMA) rather than the City proper.
- The CMA includes the RMs around Regina as well as the "bedroom" communities of Balgonie, Edenwold, Emerald Park, Lumsden, Regina Beach, Pense, etc.
- Regina City had 93% of the CMA population in 1996 although the CMA population is growing more quickly than the City population.

# Metropolitan Area Population

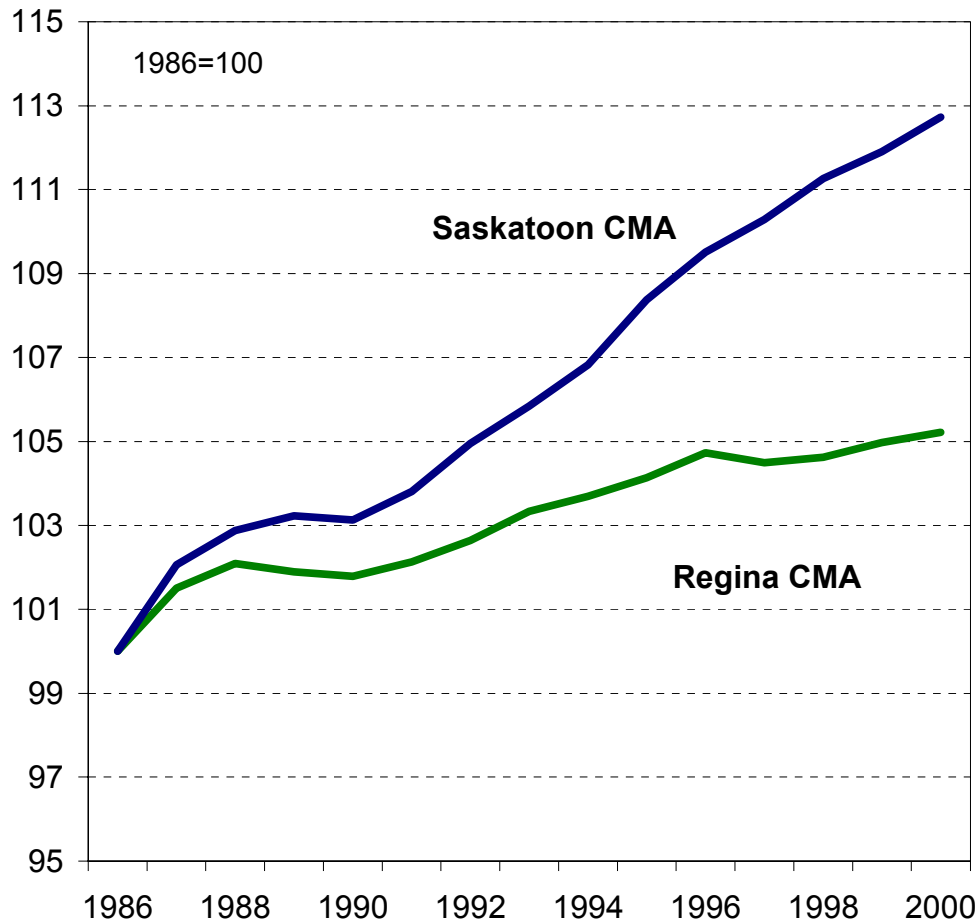
Regina CMA Population  
(Actual and Estimated)



- ⇒ After a period of strong growth in the 1980s and early 1990s, population growth slowed as migration into the city from other parts of the province declined.
- ⇒ Statistics Canada has projected the population to grow at an annual rate of 0.3% per year for the next five years.

# Regina and Saskatoon Populations

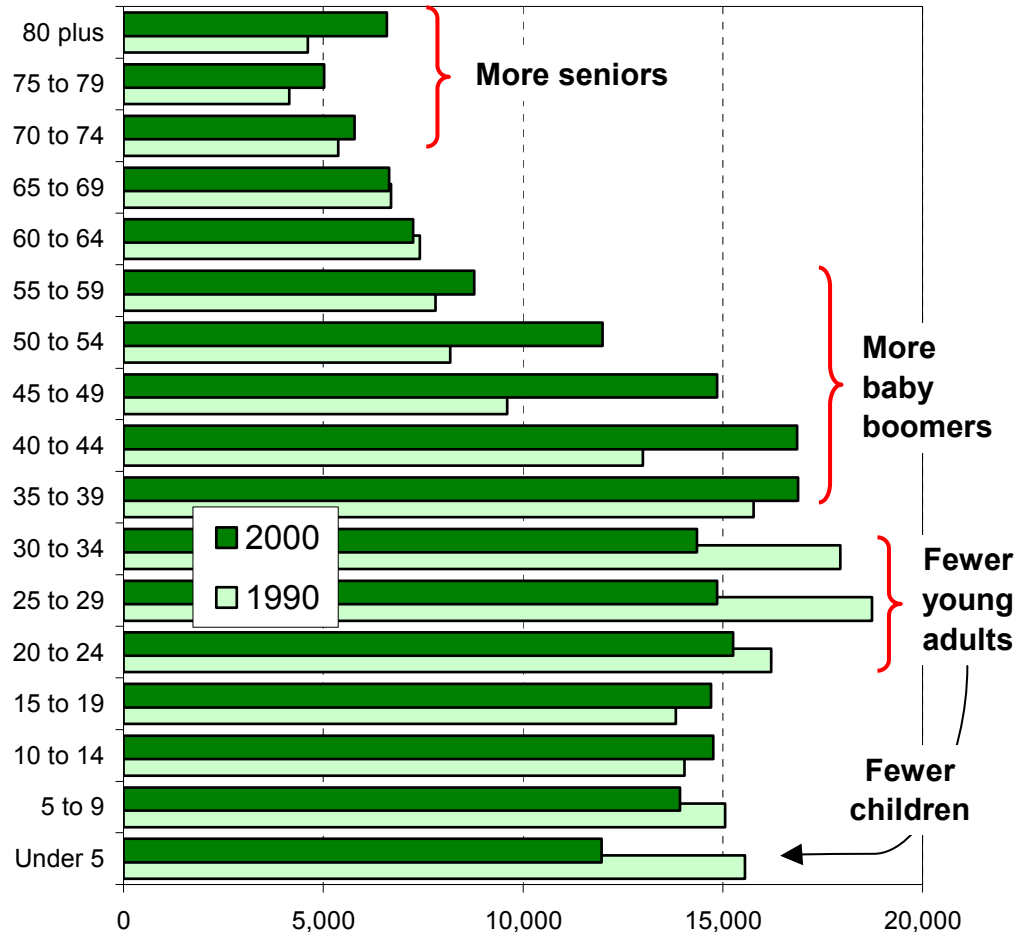
Relative Growth, Saskatoon & Regina



- ⇒ Saskatoon's annual growth rate is typically higher than Regina's although the two cities tend to follow the same general growth patterns.
- ⇒ Saskatoon's population didn't dip in the late 1990s the way that Regina's did.
- ⇒ In 2000, the CMA population in Saskatoon was 232,600 compared with 200,455 for Regina.

# Age Distribution

## Regina CMA Population by Age Group



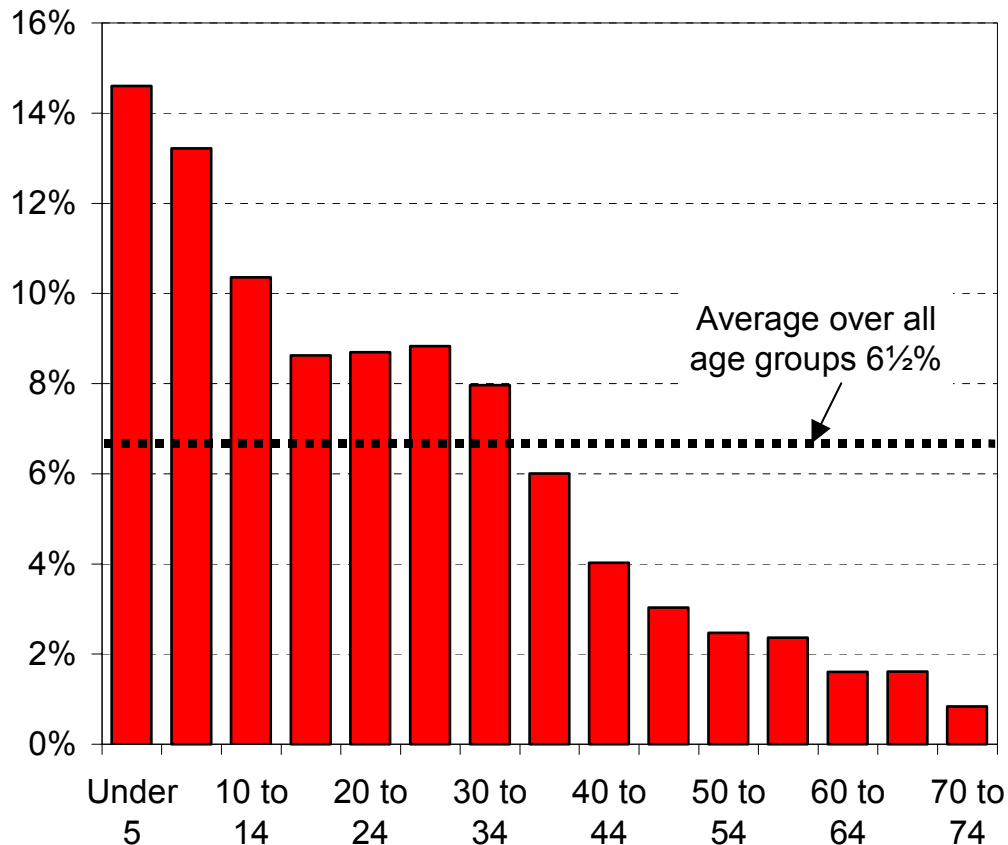
⇒ The aging of the “baby boom” generation is still the biggest determinant of the age structure in the city.

⇒ In the past ten years, the boomers have moved decisively into the 40 to 54 age group, leaving a gap in the 20 to 34 age group.

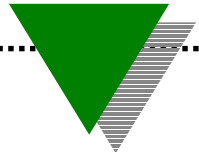
⇒ Over the next ten years, many in this group will be retiring as they move into the 50 to 64 age group.

# Aboriginal Population

Registered Indian Population as Percentage of the Total by Age Group, 2001 (City proper)



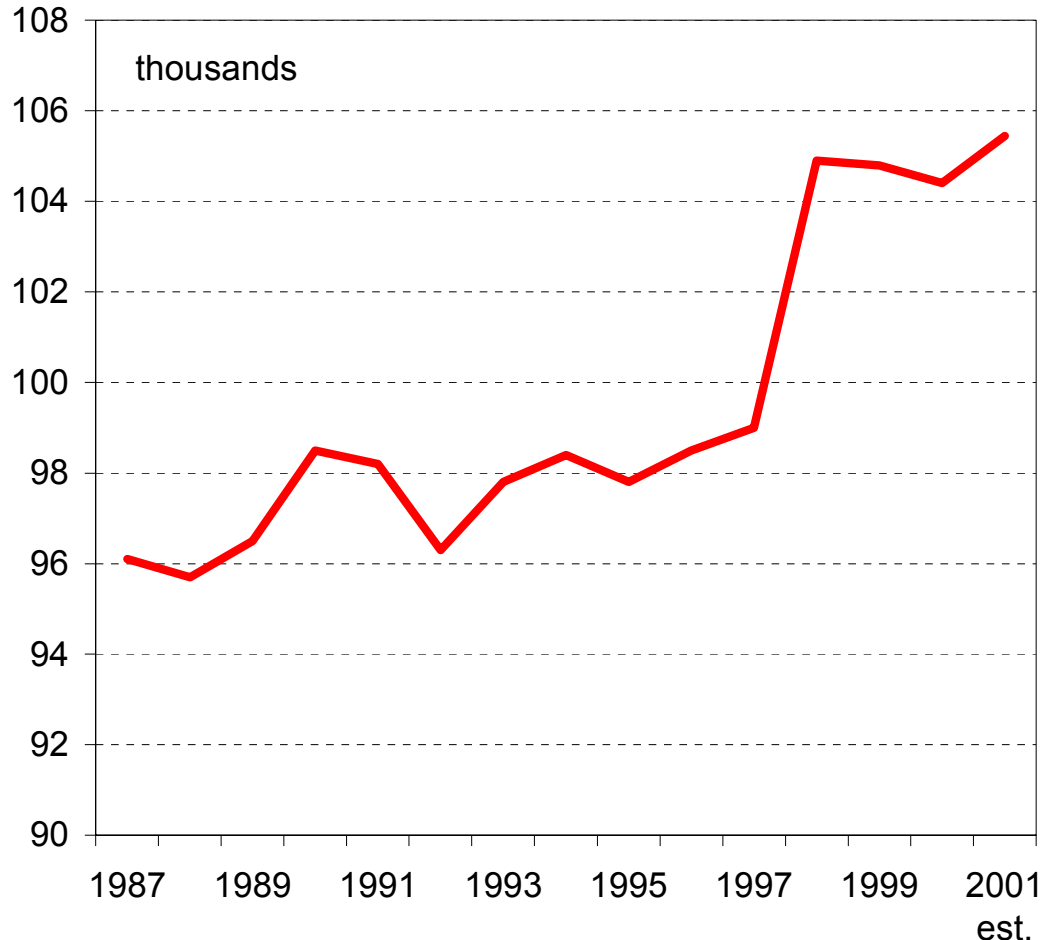
- ⇒ Until the Census is released we have current data for only the “Registered” or “Treaty” Indian population from Sask Health.
- ⇒ Sask Health estimates that there are currently 12,140 Registered Indians living in the City proper - 6½% of the population. The chart shows that the population is concentrated in the younger age groups.
- ⇒ The 1996 Census estimated the total Aboriginal population in Regina as 13,330 or 7½% of the population. The 2001 census figures should show the Aboriginal population as 9% to 10% of the city’s population.



# **Economic Trends**

# Employment - Regina CMA

## Employment in the Regina CMA

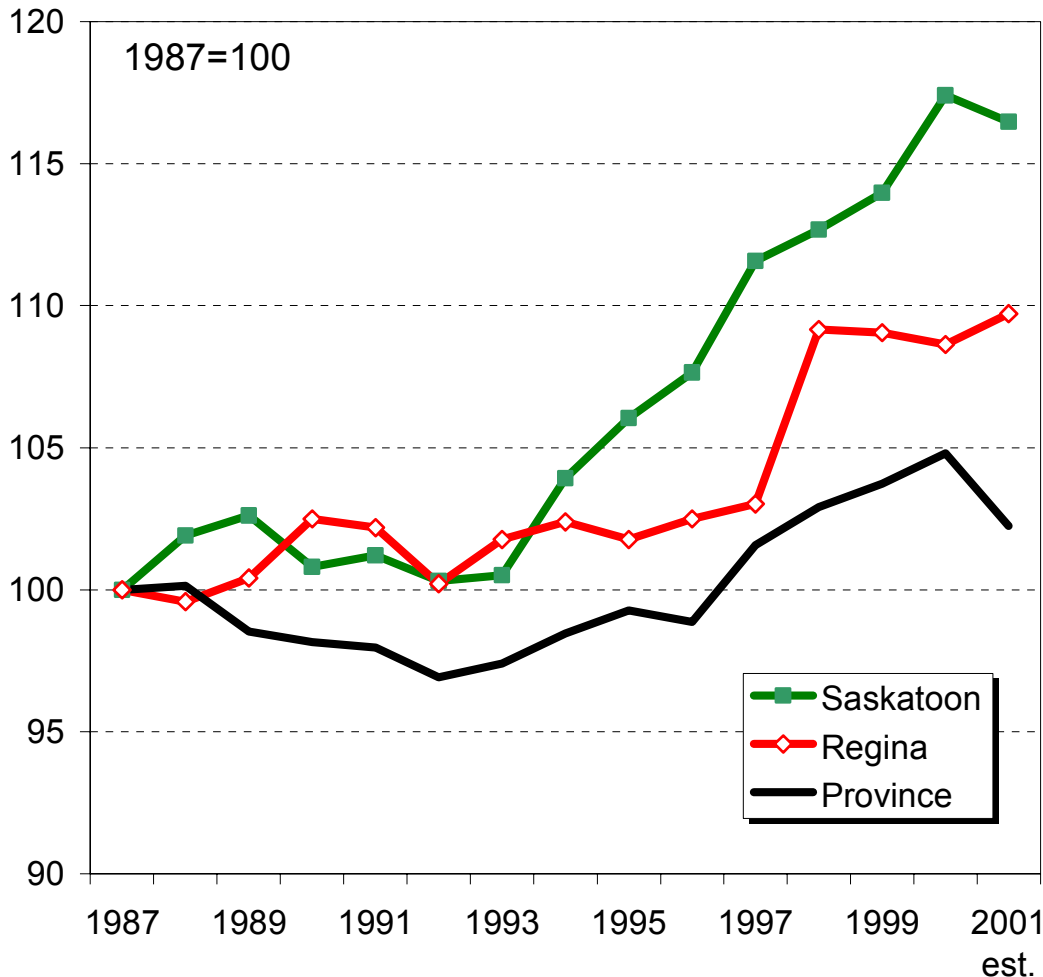


⇒ After years of slow growth in the late 1980s and early 1990s, employment increased sharply in 1998 and has remained at the new higher level since then.

⇒ From 1987 to 1997, employment increased by a mere 3,000 persons (compared with 12,000 in Saskatoon). The 6,000 increase since then has exceeded Saskatoon's growth of 5,000.

# Employment: Regina Relative to Saskatchewan

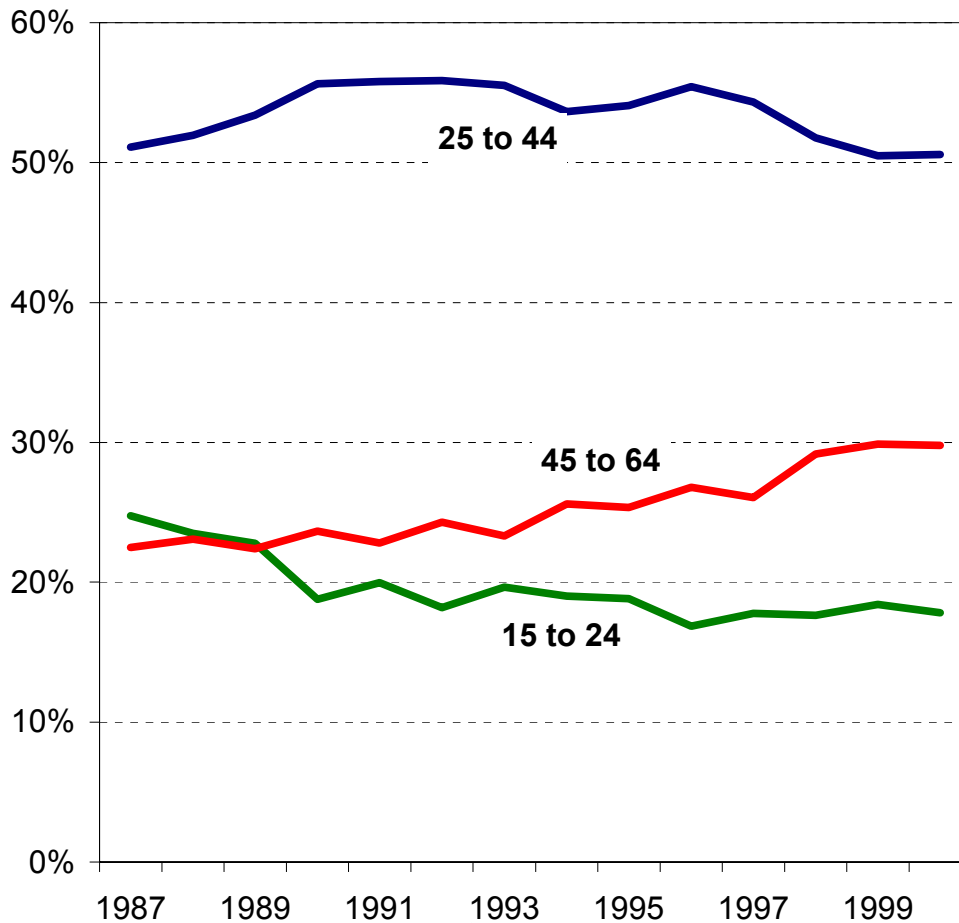
## Relative Employment Trends



- ⇒ Since the early 1990s, employment in the Regina CMA has increased more quickly than in the rest of the province but has fallen relative to Saskatoon.
- ⇒ Employment in Saskatchewan will drop by a record 2½% this year but Regina's employment will increase.

# Employment by Age Group

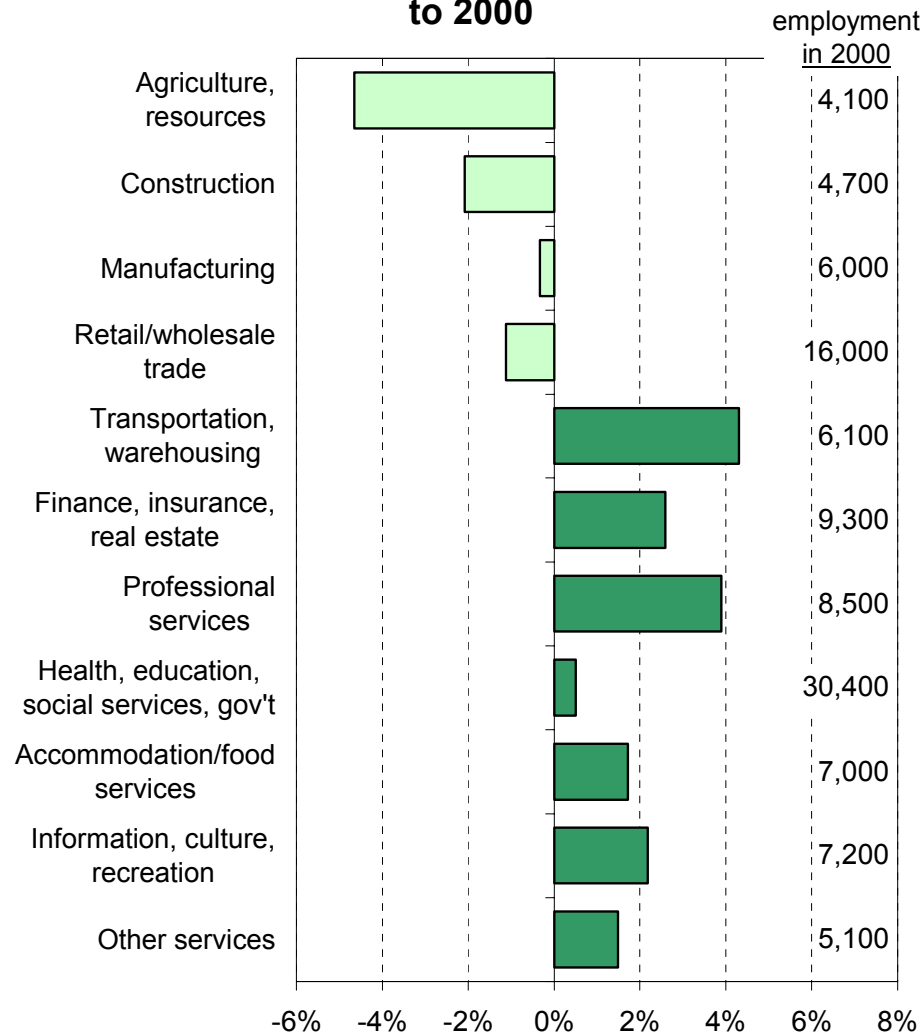
Percentage of Employment, Regina CMA



- ⇒ As the city's population ages, more of those working are in the 45 to 64 age group. By 2000, this group constituted 30% of employees compared with 22% a decade ago.
- ⇒ Corresponding with this increase is a decline in the proportion of workers in the 15 to 24 age group.

# Employment by Industry

Average Annual Employment Growth, 1990  
to 2000



⇒ All of the growth in the 1990s has been in the service sector, particularly:

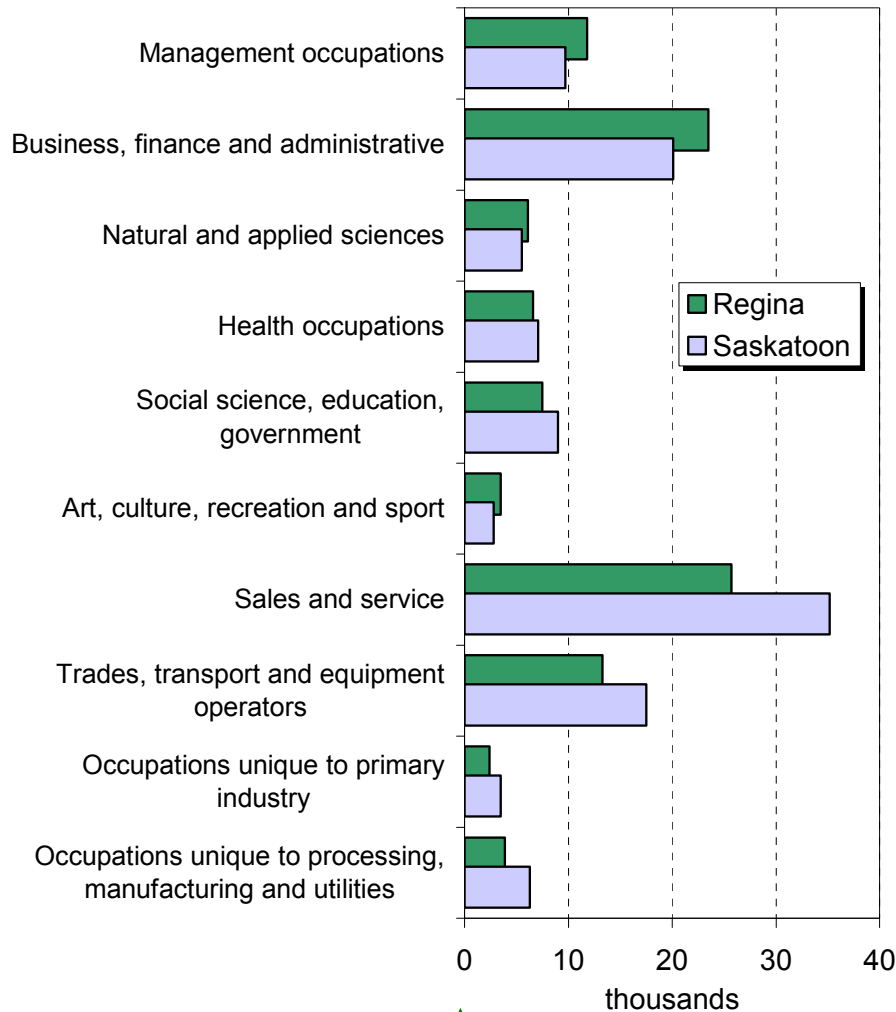
- ⇒ transportation, warehousing;
- ⇒ professional services; and
- ⇒ finance/insurance services.

⇒ The city's economy is still dominated by the public sector (30,400 = 29% of total employment).

⇒ Note that the arrival of the "big box" retailers has reduced employment in wholesale/retail trade, the second largest employer in the city.

# Employment by Occupation

## Employment by Occupation, 2000



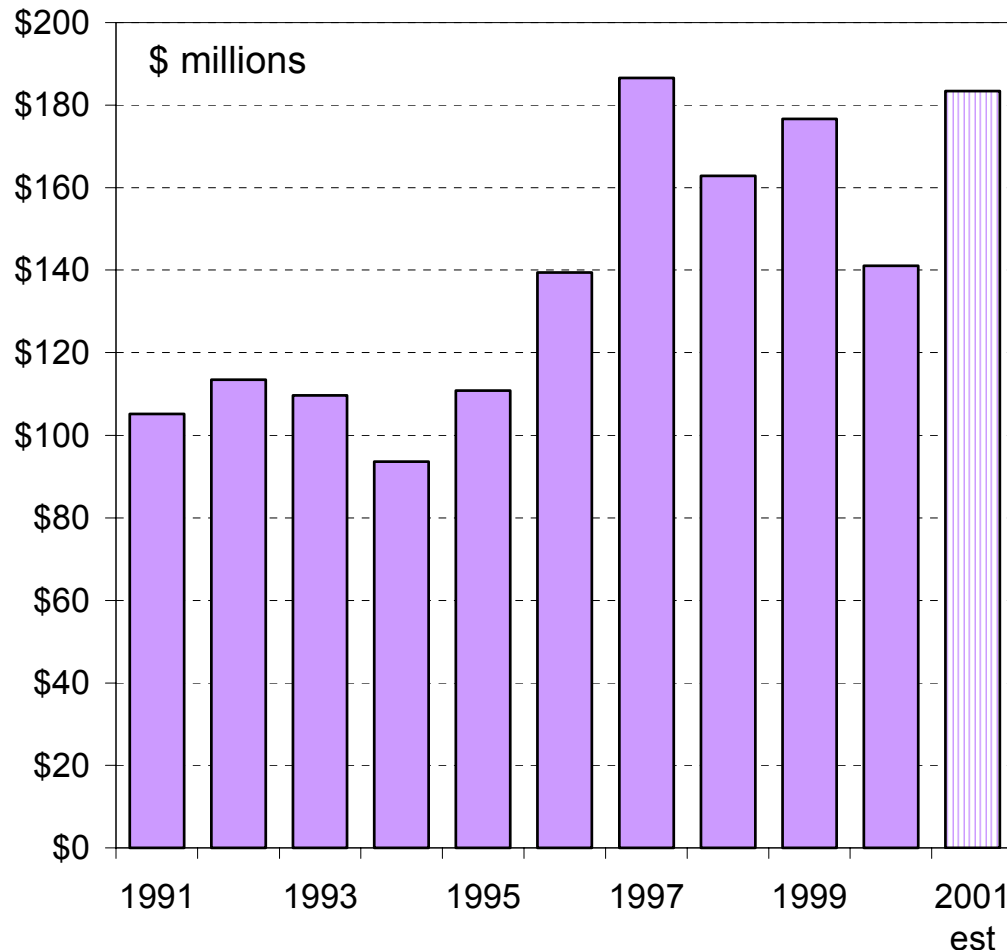
⇒ The dominance of the public sector in Regina is evident in the higher number of people in:

- ⇒ management;
- ⇒ business, finance, and administrative occupations;
- ⇒ natural and applied sciences; and
- ⇒ art, culture, recreation, and sport.

⇒ Regina has, compared with Saskatoon, relatively few people working in sales and service and in the transportation industry.

# Building Permits

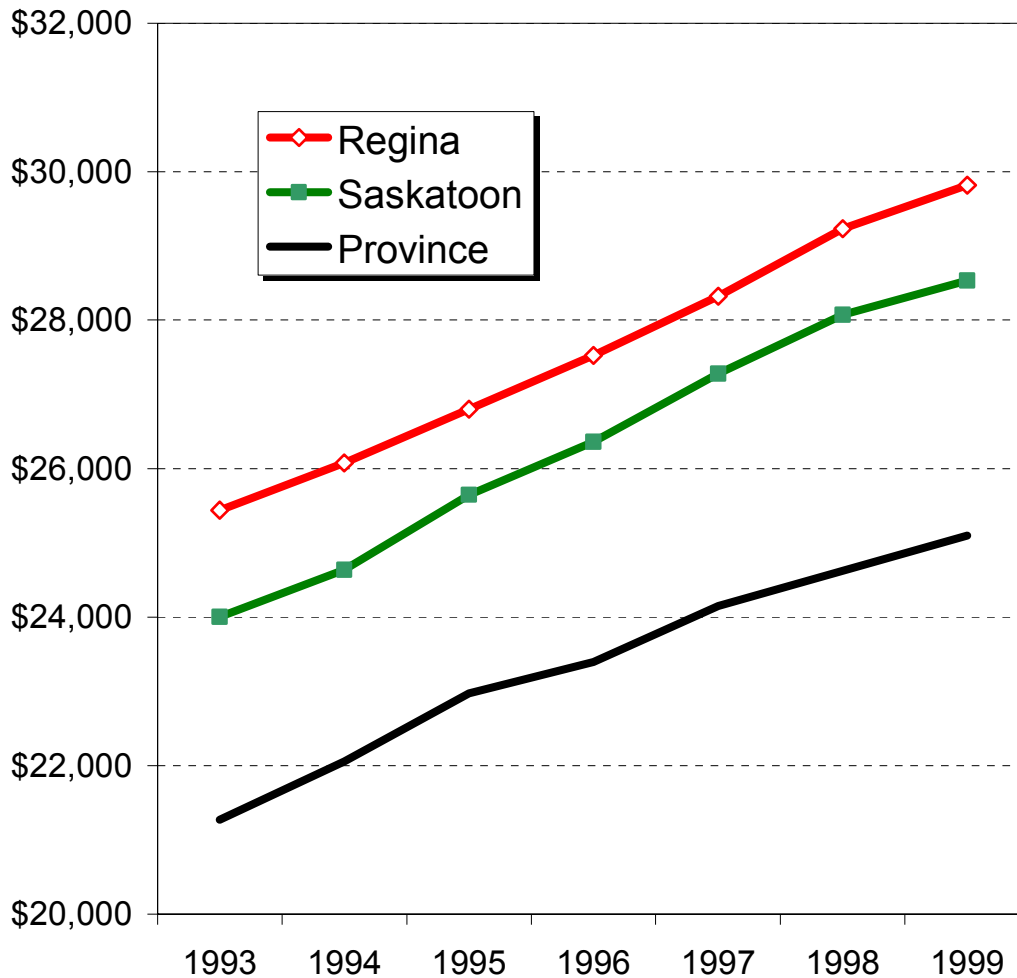
## Value of Building Permits, Regina CMA



⇒ A number of new commercial and industrial construction projects, mostly in the public sector, are at least partly responsible for the employment growth this year.

# Income

## Average Gross Income Per Taxfiler



- ⇒ Regina's residents have relatively high incomes compared with those in Saskatoon or other parts of the province.
- ⇒ A higher proportion of that income is from employment (paid or self-employment) rather than business income, investments, or government transfers.
- ⇒ In 1999, 75% of taxable income was from employment compared with 70½% for the province as a whole.

# Summary and Outlook

- ⇒ The economic environment in Regina at the present time is relatively positive compared with the situation in the rest of the province. This is largely because of the dominance of the public sector. Recent increases in government spending have increased employment and economic activity in the city.
  
  - ⇒ When a recovery in the provincial economy comes (one is expected in 2002), Saskatoon will reap more of the benefits than Regina. Private sector activity tends to gravitate to Saskatoon rather than Regina.
  
  - ⇒ The Sept 11th terrorist attack on the US is expected to have a dampening effect on:
    - ⇒ consumer spending;
    - ⇒ business investment; and
    - ⇒ tourism, that is, accommodation and food services, the airline business, for example.
- If oil prices remain low, it will also have a catastrophic effect on the provincial treasury and, subsequently, on the city's economy.